

KIZIOR & YOUNG

Orthodontics

John W. Kizior, D.D.S., M.S.D.

Derrick R. Young, D.D.S., M.S.D.

Specialists in Orthodontics and Dentofacial Orthopedics for Children & Adults

Jasper • Loogootee • Santa Claus

2005 St. Charles Street, Suite 3 Jasper, IN 47546 • Phone: 812-634-2040 • Fax: 812-482-7405

www.KiziorYoungOrthodontics.com



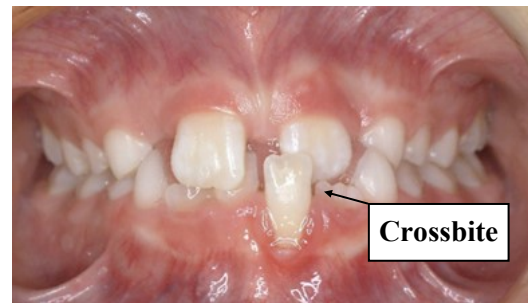
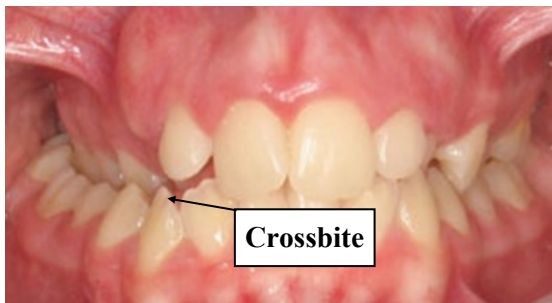
We will start with an Expander, turning 1 turn a day for 2-4 weeks depending on how much room is needed. The Expander will stay in a total of 5-6 months.

Upper limited Braces may also be placed the same day as the expander. A wire will be placed in the braces AFTER the expander turns are complete. The braces are usually on 12-14 months.

An **Expander** is an upper appliance that places pressure on the upper jaw (maxilla) by turning a midline screw. The pressure separates the mid palatal suture resulting in more room for the teeth by making the maxilla wider. This is easily done on a growing child because the bone suture is not yet fused together. With adults, the maxilla can be expanded by using an expander and having surgery to release the fused palatal sutures.

When is an expander needed?

Expanders are used to make room for the permanent teeth, resulting in a nice "U" shaped arch. An Expander is also used if one or more teeth, or all of the upper teeth, are fitting on the inside of the lower teeth. This is called a crossbite. Crossbites are corrected to allow the upper and lower jaws to grow correctly.



In some instances, the lower also needs to be widened. If this is the case, once the Expander is removed, a Lip Bumper appliance will be placed. The Lip Bumper is designed to gain space and make room for the lower teeth. It does this by moving the molars toward the back of the mouth and allowing the front teeth to naturally drift forward and make room for the permanent teeth. The Lip Bumper will usually stay in 12-14 months.

****This is a First Phase of treatment. We will monitor the eruption of the permanent teeth and evaluate if a Second Phase (Full Braces) is recommended or needed.**